

The Sonoma fire pit is handmade by Dekko in North America. Ships with your choice of NG or LP burner, one decorative aggregate option and chrome On/Off key.

Size: 72"W x 33"D x 16"H
CSA/UL Approved Burner Assembly



	Manual Ignition	Electronic Ignition
BTU/Hr	65,000	150,000
Weight	215 lbs	215 lbs
Fuel Options	NG/LP	NG/LP

Optional Accessories:

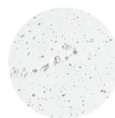
Propane Tank Cover 16"W x 16"D x 21"H

Glass Wind Guard 55"W x 15"D x 6"H

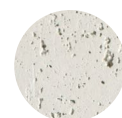
Vinyl Weather Cover

Powder Coated Aluminium Table Top 72"W x 33"D

Colour Options



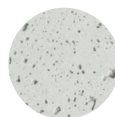
NATURAL



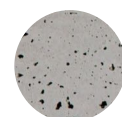
LIMESTONE



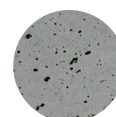
CLAY



ASH



SANDSTONE



CHARCOAL

Decorative Aggregate Options



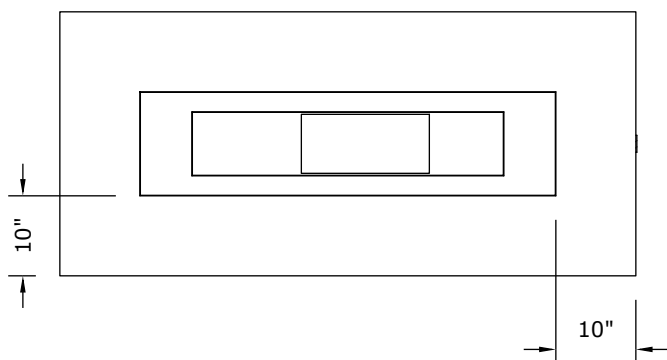
IVORY BEACH
STONE



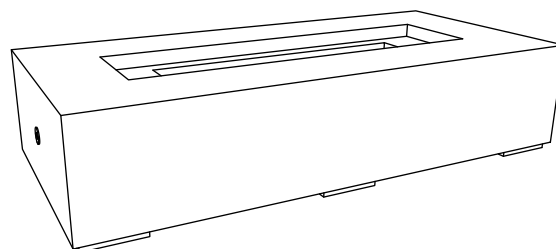
SLATE BEACH
STONE



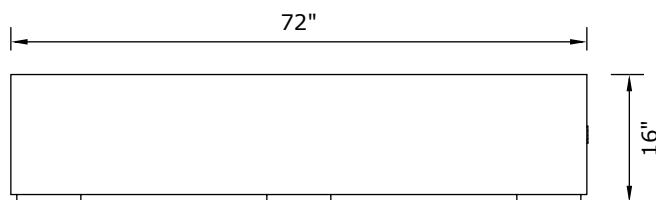
BLACK LAVA
ROCK



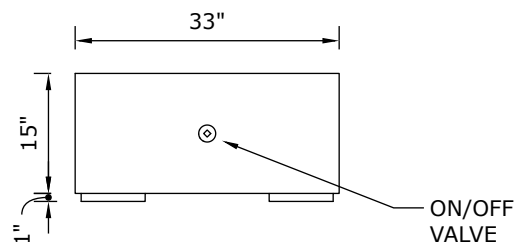
PLAN VIEW



PERSPECTIVE VIEW



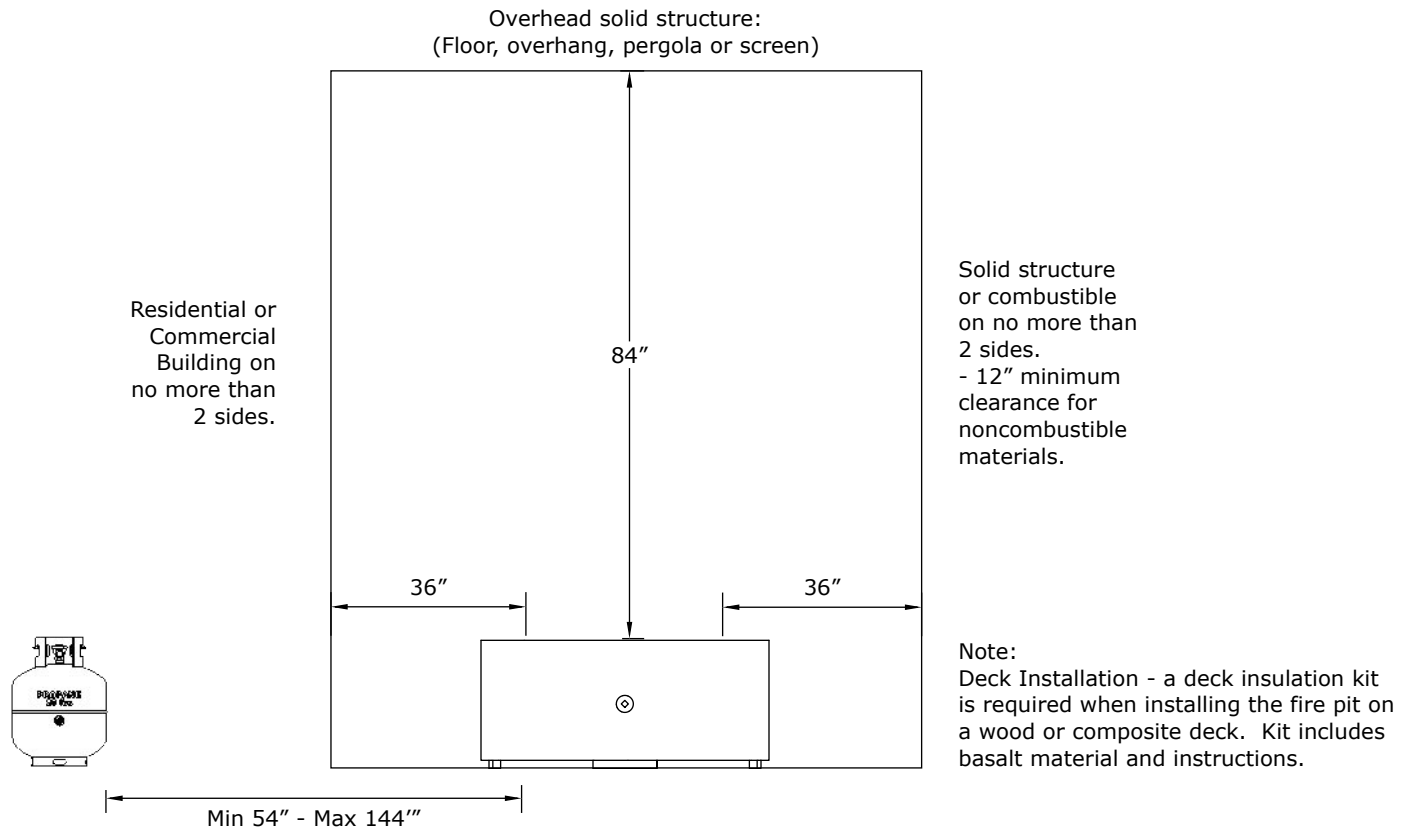
FRONT ELEVATION



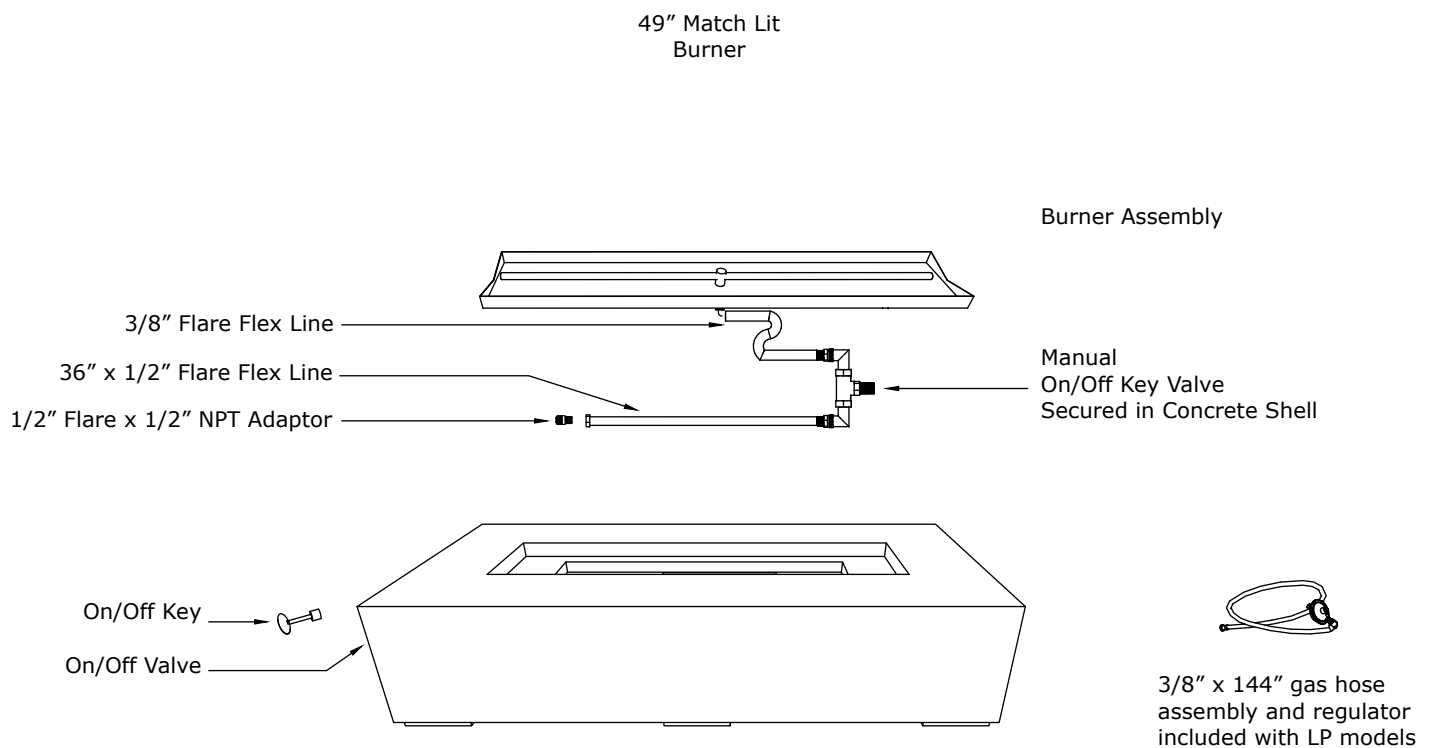
SIDE ELEVATION



Clearances

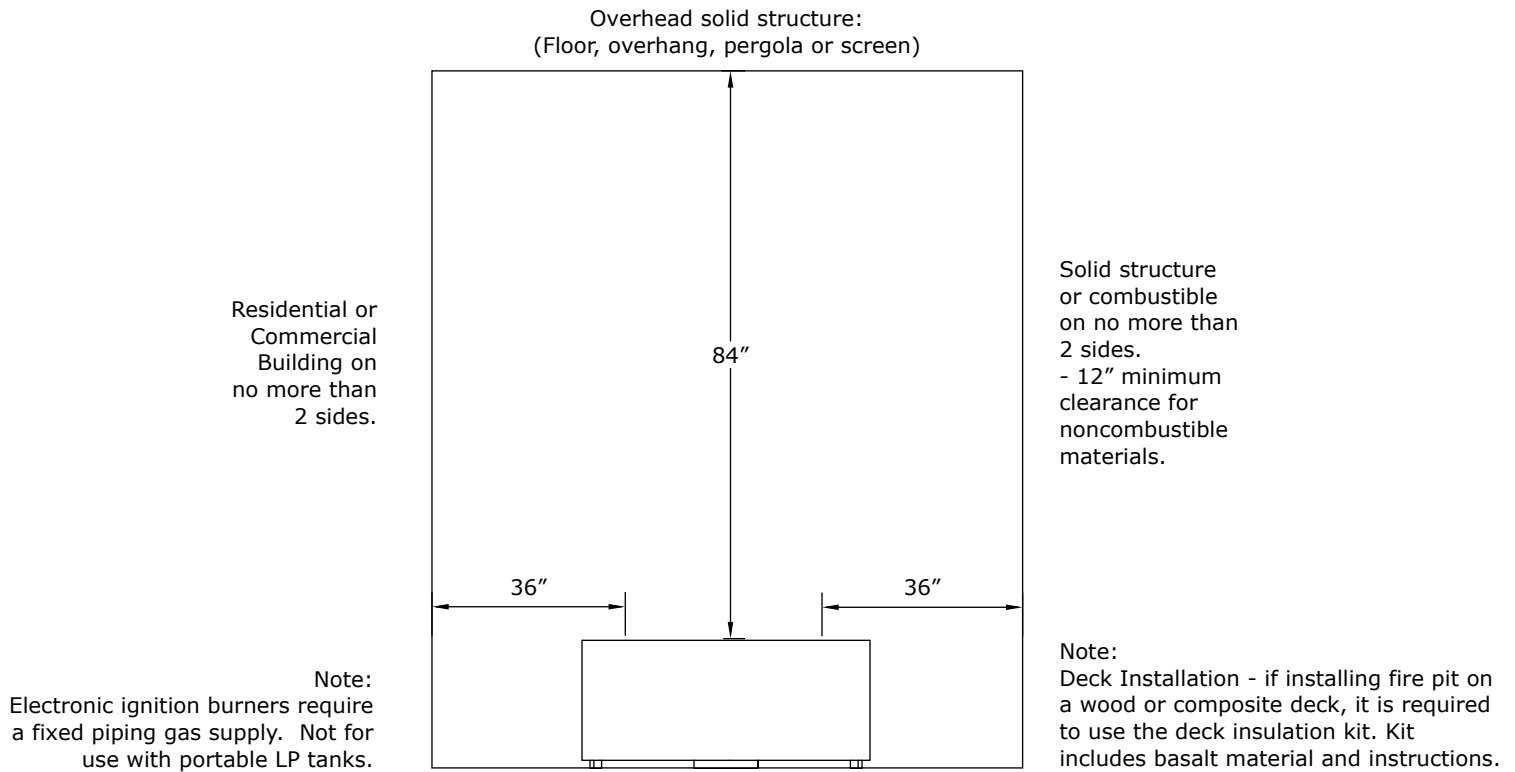


Burner Assembly





Clearances:



Burner Assembly

Electrical:

120V Outdoor receptacle required.
Must be installed and grounded in accordance with local codes.

49" Electronic Ignition
Burner

